

Chow Steel Industries Public Company Limited “CHOW”

Opportunity Day Quarter 1/2012
June 8, 2012



The information contained in this presentation is intended solely for your personal reference only. If you are not an intended recipient, you must not read, disclose, copy, circulate, retain, distribute or take any action in reliance upon this material.

This presentation is not intended to substitute your own analysis and investigation and should not be considered a recommendation to any recipient of this presentation. Some statements contained herein are forward-looking statements identified by the use of forward-looking terminology such as “may”, “will”, “expect”, “anticipate”, “intend”, “estimate”, “continue”, “plan” or other similar words, which are subject to various risks and uncertainties. These statements include statements with respect to Chow Steel Industries Public Company Limited (the “Company” or “CHOW”)’s and their subsidiary corporate plans, strategies and belief and other statements that are not historical facts.

This presentation is prepared based on the assumptions and beliefs of CHOW Group’s management in light of the information currently available to the Company involving risks and uncertainties which may cause the actual results, performance or achievements to be materially different from any future results, performance or achievements expressed or implied by such forward-looking statements. Nothing in this presentation is, or shall be relied on as promise or representation of the Company as to the future.

INDUSTRY OVERVIEW

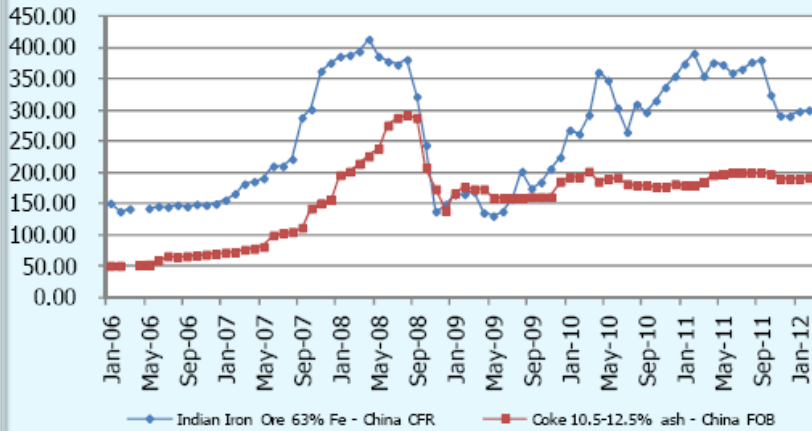
FINANCIAL PERFORMANCE

Steel Use per Capita (Unit : Kg)

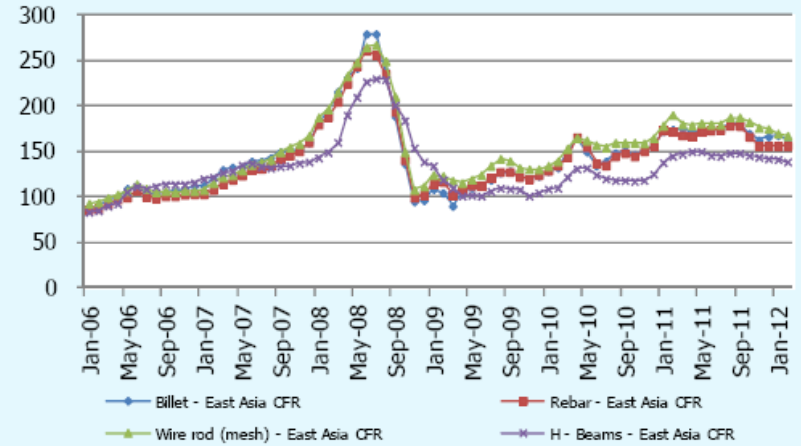
Country	2001	2002	2003	2004	2005	2006	2007	2008	2009	2010
Singapore	681.3	714.4	677.1	689.0	677.8	445.2	636.9	737.0	609.7	570.1
Malaysia	332.5	311.4	268.1	303.3	284.8	277.8	309.8	335.9	258.4	315.8
Thailand	120.8	158.9	173.8	198.5	216.0	194.6	195.2	207.1	163.0	211.0
Vietnam	46.3	59.5	58.2	64.4	61.3	66.4	116.3	104.9	131.7	139.8
Philippine	37.5	44.0	41.4	34.3	34.0	34.3	38.2	37.0	35.9	38.0
Indonesia	23.2	22.1	21.0	25.3	31.6	26.9	30.9	37.1	30.9	37.3
Myanmar	6.1	8.1	9.5	9.8	10.7	11.4	11.3	10.5	17.1	19.4
World	135.6	143.2	152.8	165.9	175.8	190.0	201.7	196.8	183.3	206.2

Source : World Steel Association

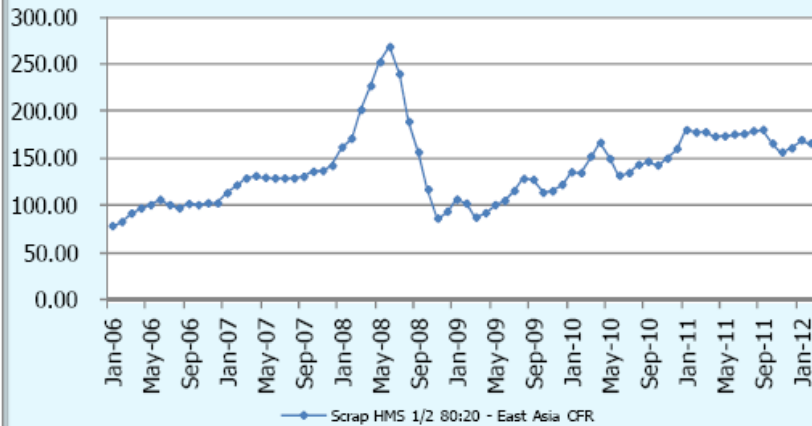
Raw Material Price Index



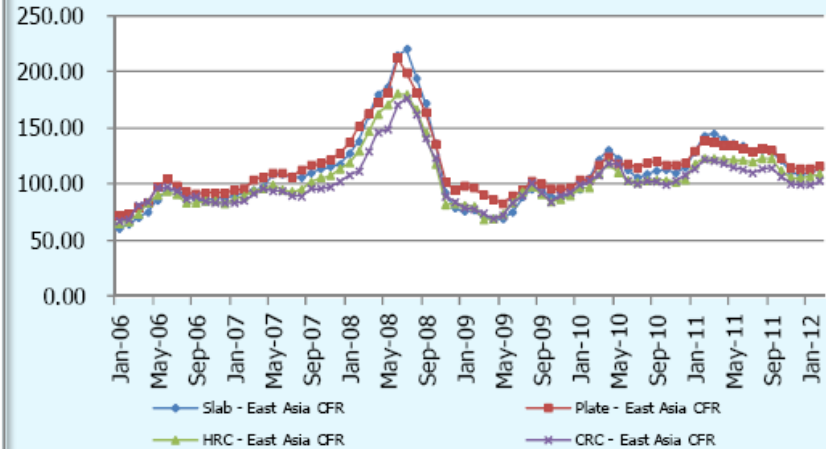
Billet & Long products Price Index - East Asia



Scrap Price Index

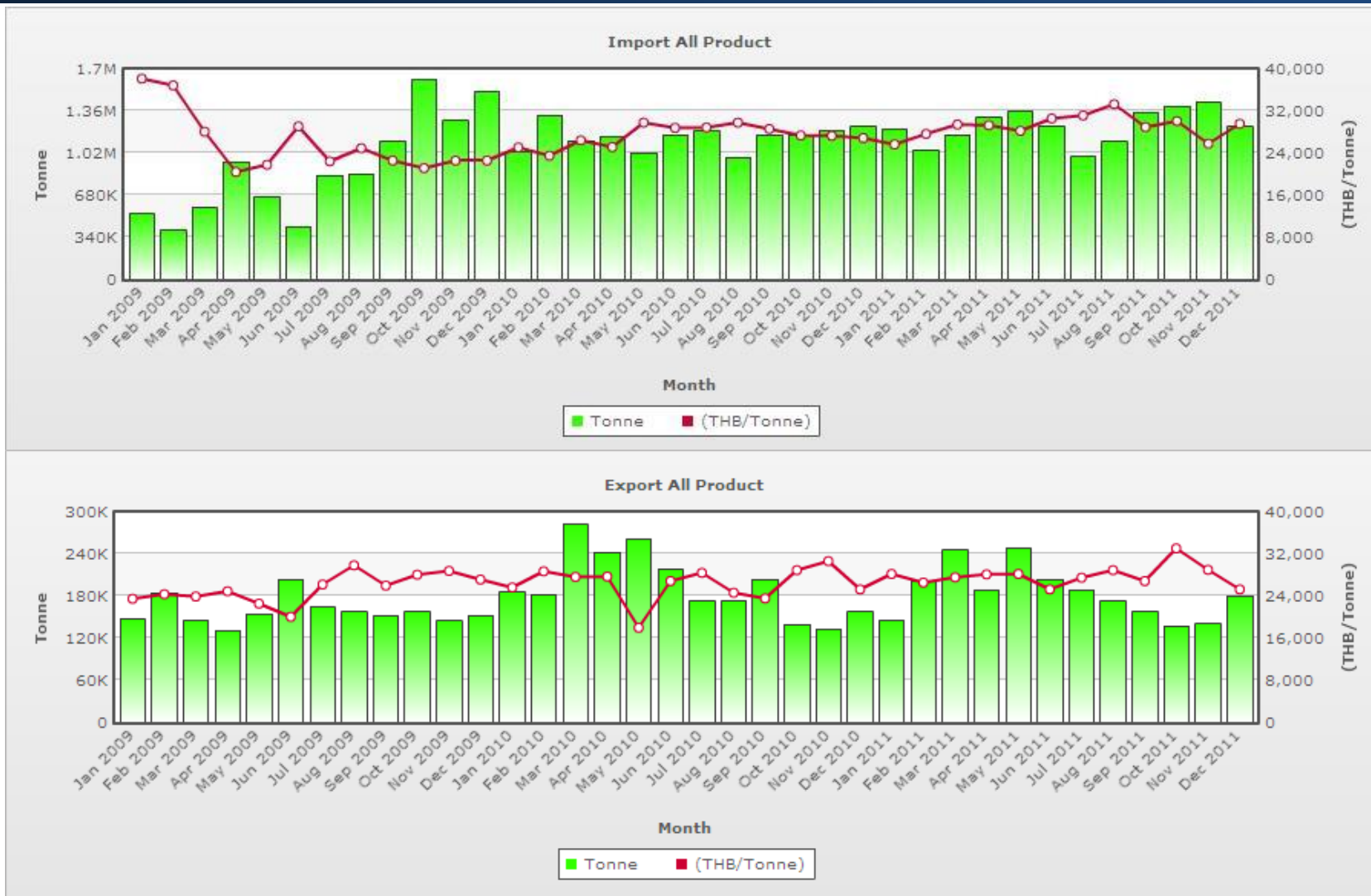


Slab & Flat products Price Index - East Asia

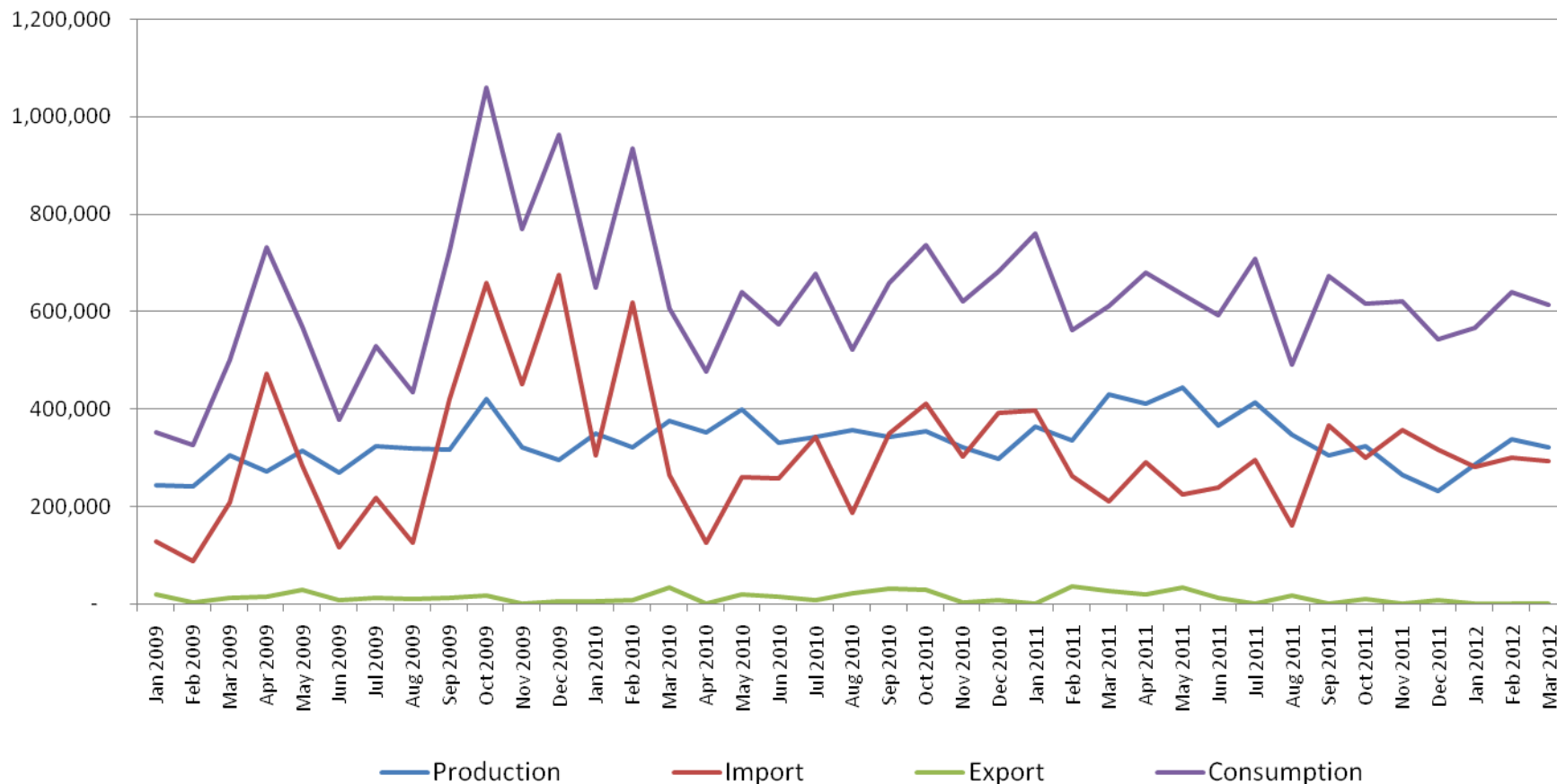


Source : Iron and Steel Institute of Thailand

Thailand Iron and Steel Import-Export Value



Source : Iron and Steel Institute of Thailand



Source : Iron and Steel Institute of Thailand

INDUSTRY OVERVIEW

Thailand steel demand outlook (3-6 months in advance)

According to the Jan 2012 figure, Thailand steel demand in next 3-6 months can see a recovery pace. The leading index registered increased by 3.8% (Six-month smoothed annualized growth rate).

Figure: Six-month smoothed annualized growth rate of ISIT's Leading Index since 2000 – Jan 2012

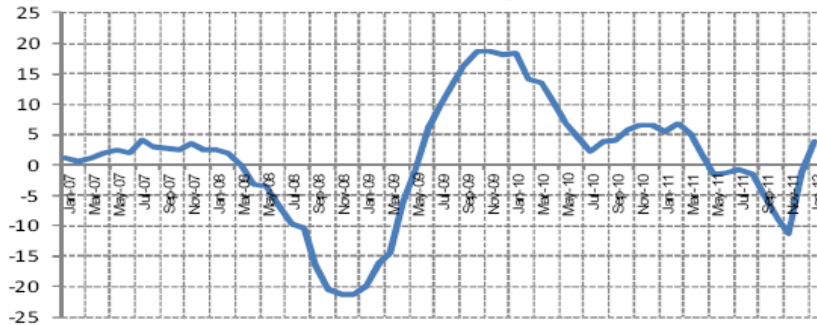


Figure: Thailand Stock Exchange (Seasonal Adjusted)

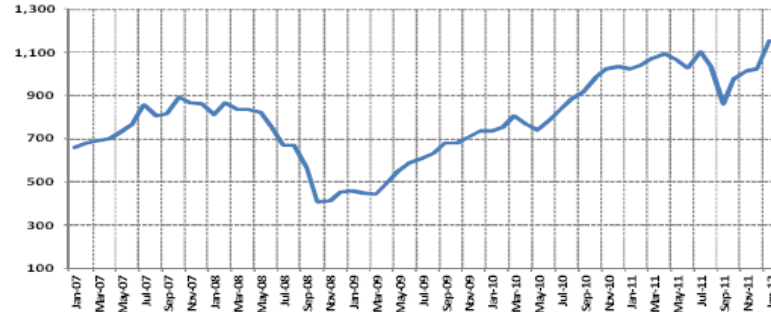
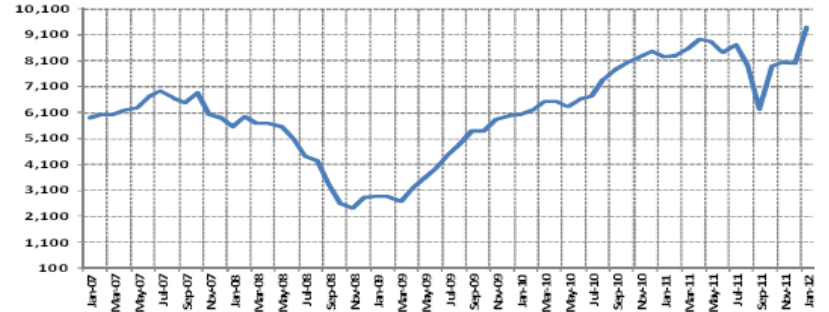


Figure: Thailand Stock Exchange in Construction Materials (Seasonal Adjusted)



Source : Iron and Steel Institute of Thailand

Thailand steel demand outlook (3-6 months in advance)

Figure: Thailand Cement Production ('000 Tonnes) (Seasonal Adjusted)

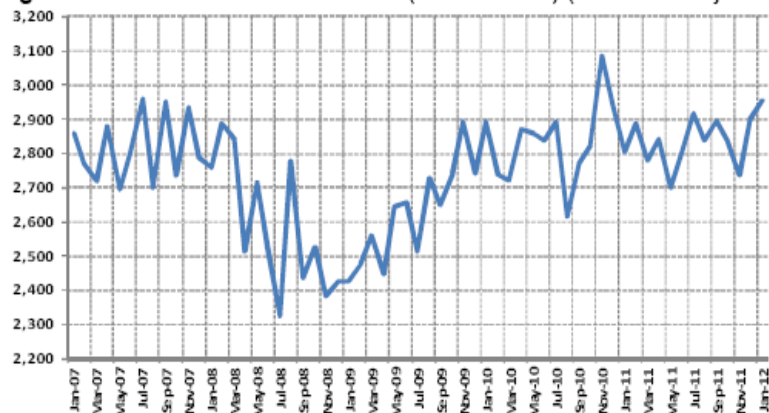


Figure: Thailand Car Sale (Unit) (Seasonal Adjusted)

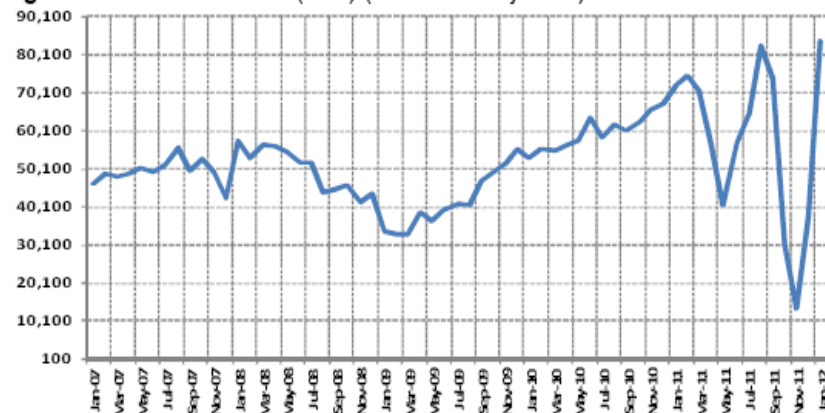


Figure: Thailand Refrigerator Production (Unit) (Seasonal Adjusted)

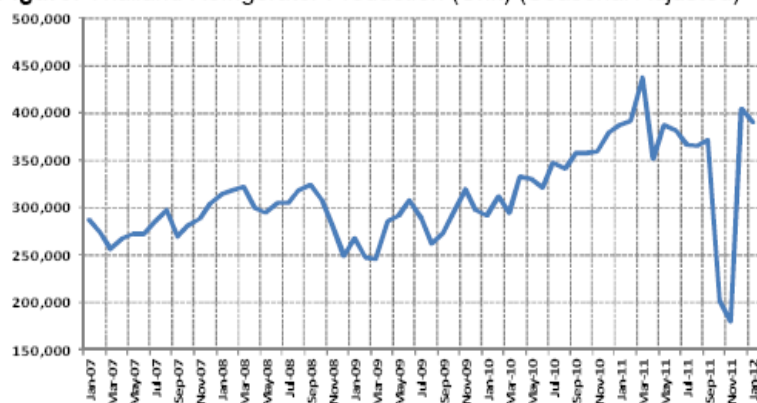
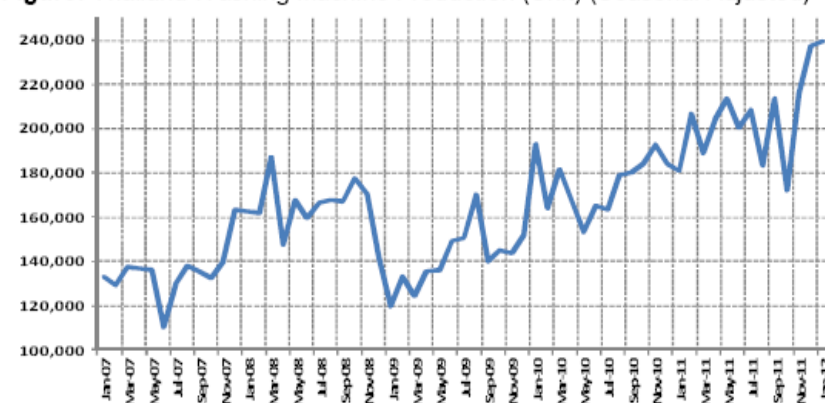


Figure: Thailand Washing Machine Production (Unit) (Seasonal Adjusted)



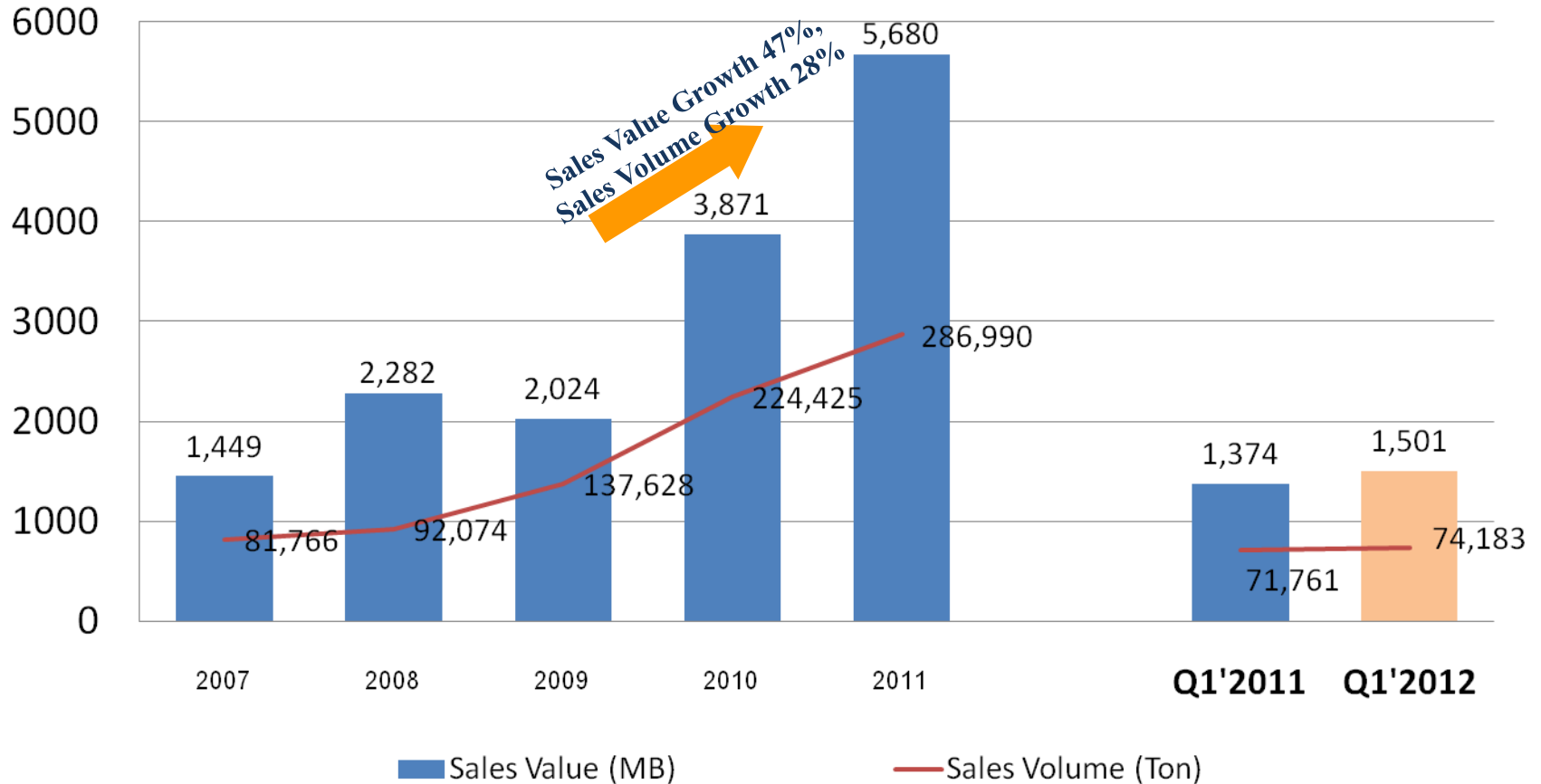
Source : Iron and Steel Institute of Thailand

Outlook on domestic steel industry in 2012

- ❑ Long steel product, which is used in the construction industry, would expand
 - Increasing investment by the government for repairing the damaged infrastructure from the float, including water management project for preventing float in the short and long term. In addition, the large investment project such as rail system, which has progression in several projects
 - Construction in the private sector might expand for repairing household and business building including industrial estate and property development project, which would construct more efficiency in the flood defending system

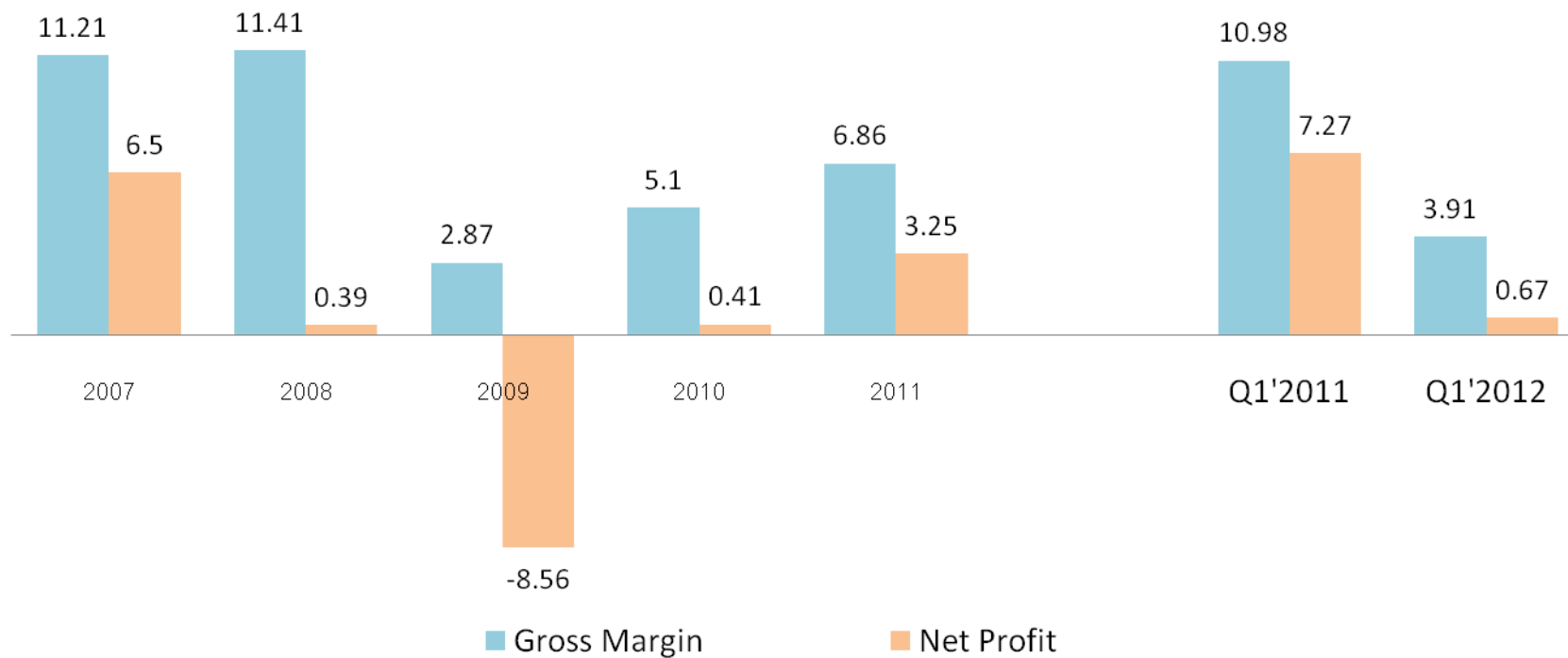
FINANCIAL PERFORMANCE

Revenue from Sales

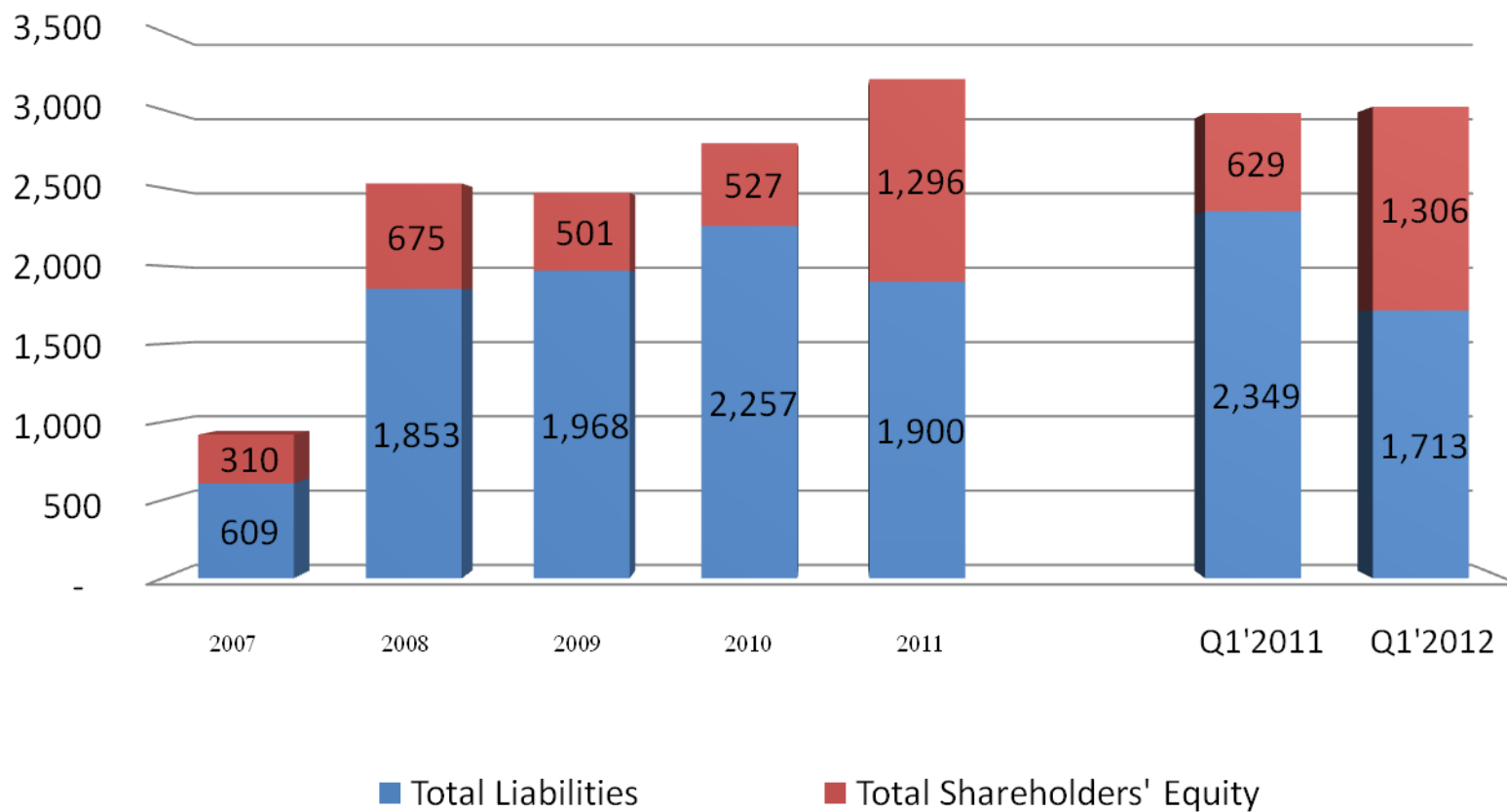


Financial Highlight

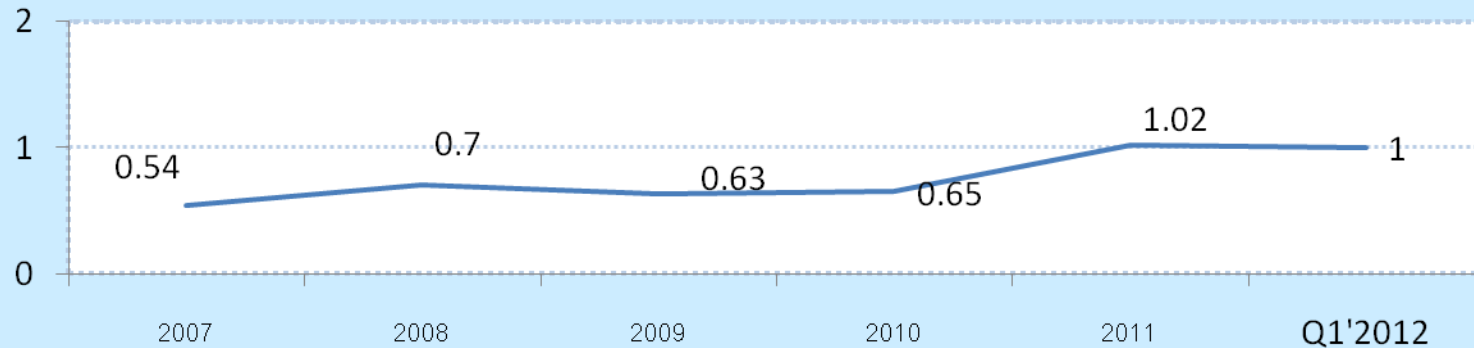
➤ Gross Margin and Net Profit (%)



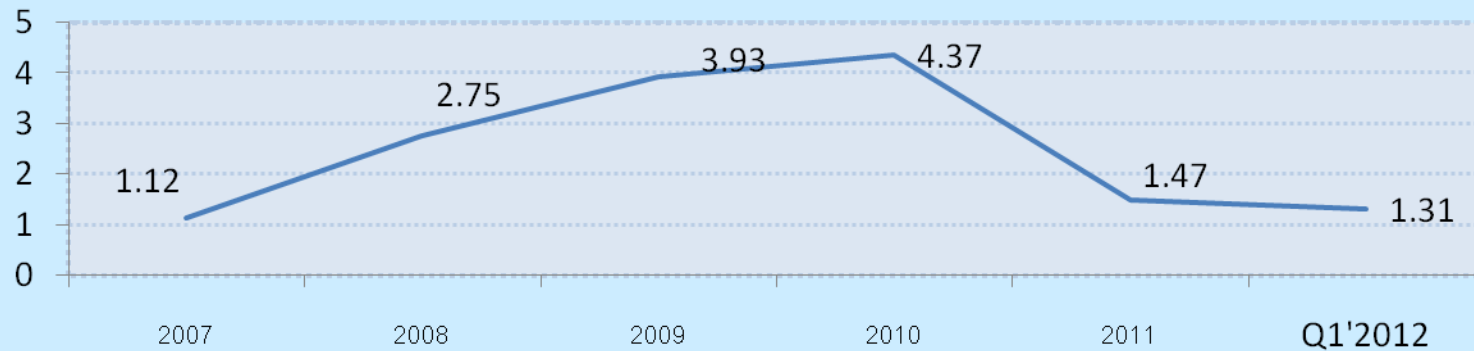
Financial Position



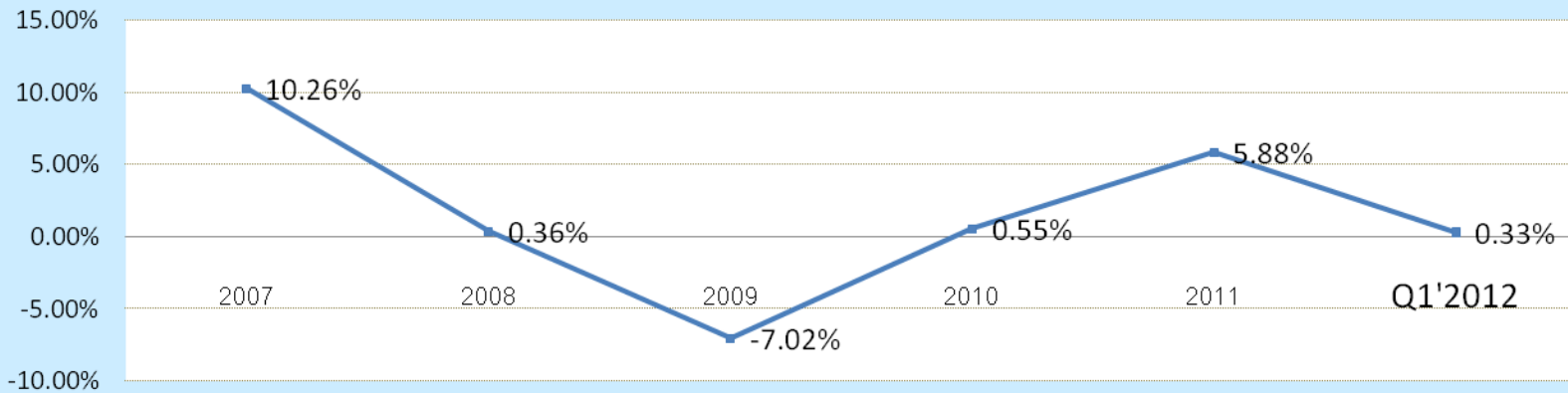
Liquidity ratio



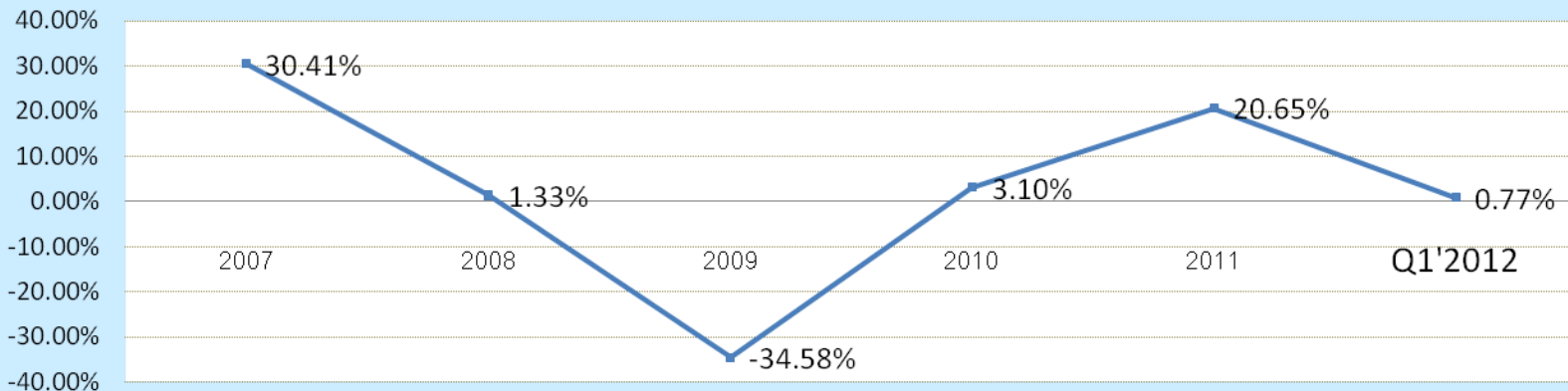
D/E ratio



Return on Assets



Return on Equity



Q & A

www.chowsteel.com

